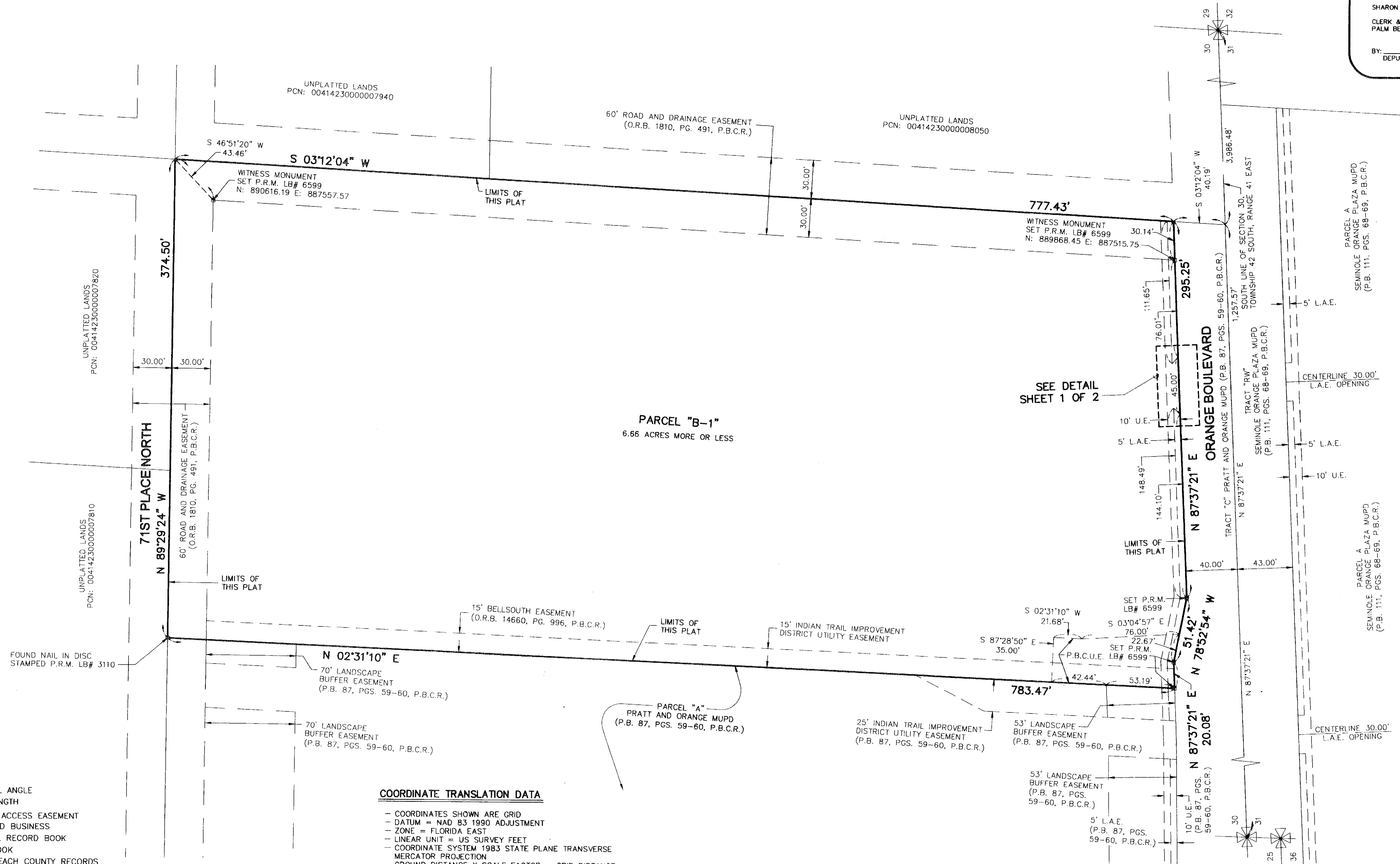


# PRATT AND ORANGE MUPD - PARCEL "B" REPLAT

BEING A RE-PLAT OF PARCEL "B", PRATT AND ORANGE MUPD, A SUBDIVISION ACCORDING TO THE PLAT THEREOF, AS RECORDED IN PLAT BOOK 87, PAGES 59 THROUGH 60 OF THE PUBLIC RECORDS OF PALM BEACH COUNTY, FLORIDA LYING WITHIN SECTION 30, TOWNSHIP 42 SOUTH, RANGE 41 EAST, PALM BEACH COUNTY, FLORIDA SHEET 2 OF 2

STATE OF FLORIDA )  
 COUNTY OF PALM BEACH ) S.S.  
**200**  
 THIS INSTRUMENT WAS FILED FOR RECORD AT \_\_\_\_\_ M. THIS \_\_\_\_\_ DAY OF \_\_\_\_\_, 20\_\_\_\_ AND DULY RECORDED IN: PLAT BOOK \_\_\_\_\_ ON PAGE \_\_\_\_\_ SHARON R. BOCK CLERK & COMPTROLLER PALM BEACH COUNTY BY: \_\_\_\_\_ DEPUTY CLERK



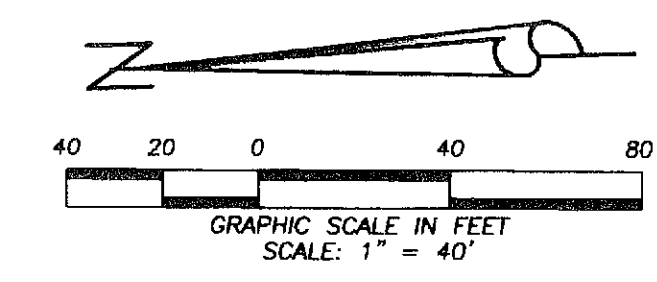
- LEGEND**
- D = CENTRAL ANGLE
  - L = ARC LENGTH
  - L.A.E. = LIMITED ACCESS EASEMENT
  - LB = LICENSED BUSINESS
  - O.R.B. = OFFICIAL RECORD BOOK
  - P.B. = PLAT BOOK
  - P.B.C.R. = PALM BEACH COUNTY RECORDS
  - P.B.C.U.E. = PALM BEACH COUNTY UTILITY EASEMENT
  - P.C.N. = PARCEL CONTROL NUMBER
  - PG. = PAGE(S)
  - P.R.M. = PERMANENT REFERENCE MONUMENT
  - R = RADIUS
  - U.E. = UTILITY EASEMENT
  - ☐ = PERMANENT REFERENCE MONUMENT (P.R.M.) 4" X 4" CONCRETE MONUMENT WITH P.K. NAIL IN BRASS DISC STAMPED "PRM LB 6599"

**COORDINATE TRANSLATION DATA**

- COORDINATES SHOWN ARE GRID
- DATUM = NAD 83 1990 ADJUSTMENT
- ZONE = FLORIDA EAST
- LINEAR UNIT = US SURVEY FEET
- COORDINATE SYSTEM 1983 STATE PLANE TRANSVERSE MERCATOR PROJECTION
- GROUND DISTANCE X SCALE FACTOR = GRID DISTANCE
- ALL DISTANCES ARE GROUND UNLESS OTHERWISE NOTED
- SCALE FACTOR = 1.00000189

N 02°31'10" E (PLAT) = 00°00'00" BEARING ROTATION (PLAT TO GRID)  
 N 02°31'10" E (GRID)

WEST LINE OF PARCEL "B" PRATT AND ORANGE MUPD (P.B. 87, PGS. 59 AND 60, P.B.C.R.)



THIS INSTRUMENT WAS PREPARED BY: DAVID A. BOWER, P.S.M. #5888 IN THE OFFICES OF DENNIS J. LEAVY AND ASSOCIATES, INC. CERTIFICATE OF AUTHORIZATION NUMBER: LB6599 460 BUSINESS PARK WAY, SUITE B ROYAL PALM BEACH, FLORIDA 33411 PHONE: (561) 753-0650 FAX: (561) 753-0290

**DENNIS J. LEAVY & ASSOCIATES, INC.**  
 LAND SURVEYORS AND MAPPERS

460 BUSINESS PARK WAY • SUITE B • ROYAL PALM BEACH, FL • 33411  
 PHONE: (561) 753-0650 FAX: (561) 753-0290

SCALE: AS SHOWN	CHECKED BY: DJL	DATE: 01/04/10
DRAWN BY: DAB	JOB NO.: 08-100	